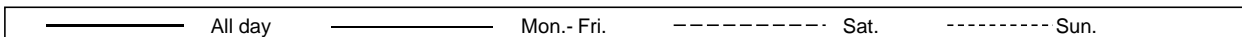
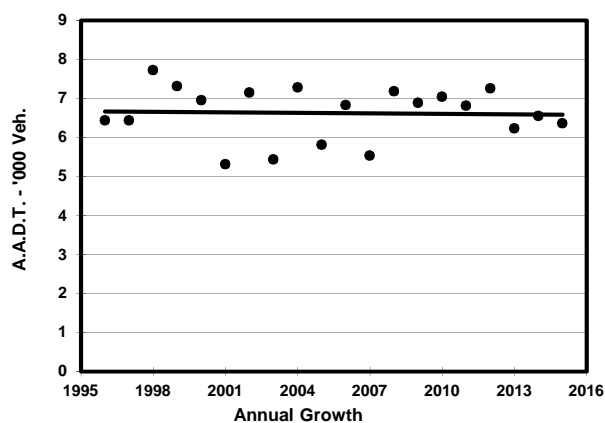
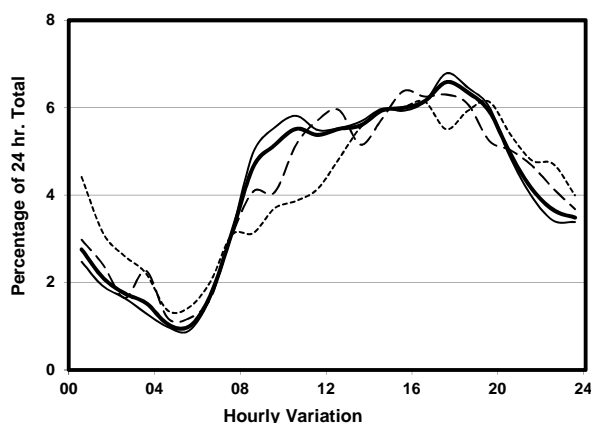
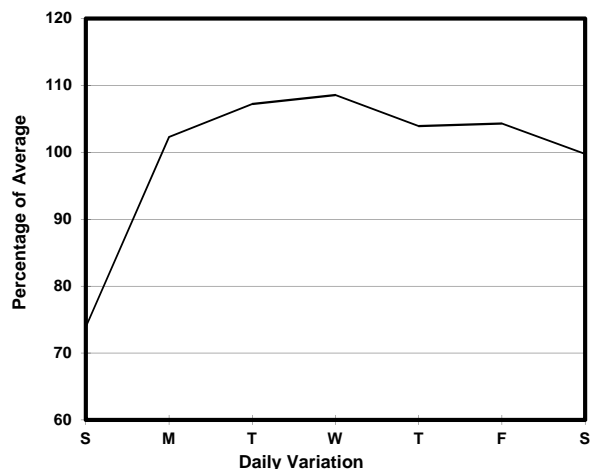
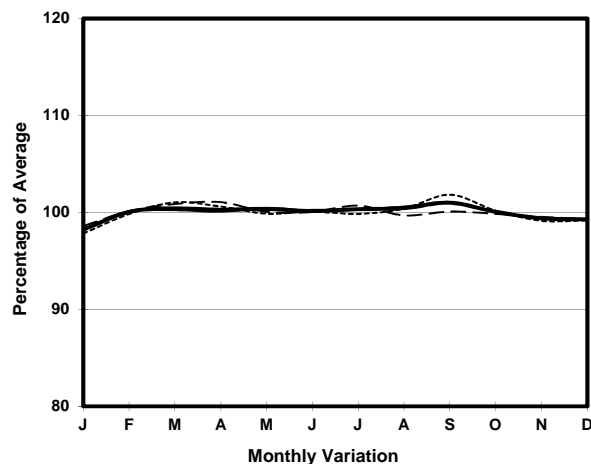


YEAR 2015  
 COVERAGE (B) STATION 2209  
 ROAD NETWORK MAJOR  
 ROAD TYPE DISTRICT DISTRIBUTOR

LINK DES VOEUX RD C (from MORRISON ST to QUEEN VICTORIA ST)



## 1. TRAFFIC FLOW VARIATION AND GROWTH



## 2. TRAFFIC CHARACTERISTICS (BY DIRECTION)

Parameter	All - Day	Mon. - Fri.	Sat.	Sun.
<b>EAST BOUND</b>				
A.A.D.T.	3910	4180	4120	2770
R 12 / 24 - %	65.3	67.6	61.8	53.1
R 16 / 24 - %	83.1	84.9	80.8	73.7
AM Peak Hour	0900-1000	0800-0900	0900-1000	0900-1000
One-way flow at AM peak hour	170	200	140	80
T - % (AM)	-	31.7	-	-
PM Peak Hour	1700-1800	1700-1800	1700-1800	1800-1900
One-way flow at PM peak hour	270	300	260	170
T - % (PM)	-	9	-	-
Prop.of commercial vehicles - 16 hr.	-	13.8	-	-
<b>WEST BOUND</b>				
A.A.D.T.	2450	2610	2310	2000
R 12 / 24 - %	67	67.3	67.8	64.3
R 16 / 24 - %	86.9	87.1	86.9	85.9
AM Peak Hour	0900-1000	0900-1000	0800-0900	0900-1000
One-way flow at AM peak hour	160	180	130	100
T - % (AM)	-	96.1	-	-
PM Peak Hour	1800-1900	1800-1900	1600-1700	1600-1700
One-way flow at PM peak hour	160	170	150	120
T - % (PM)	-	100	-	-
Prop.of commercial vehicles - 16 hr.	-	93.9	-	-

## 3. OTHER INFORMATION AND COMMENT

**4. Vehicle classification and occupancy - Monday to Friday**

Time		Class of vehicle									
		Motor	Private	Taxi	Private	PLB	Goods veh.		Non	Fr. Bus	
		Cycle	Car		LB		Light	M & H	Fr. Bus	SD	DD
0700-0800	Pro	0.0	3.2	15.9	0.0	0.0	9.5	0.0	3.2	0.0	68.3
	Ocp	0.0	1.0	1.6	0.0	0.0	1.0	0.0	10.0	0.0	17.4
0800-0900	Pro	4.0	16.0	8.0	2.0	0.0	12.0	0.0	6.0	0.0	52.0
	Ocp	1.0	1.3	2.0	4.0	0.0	1.5	0.0	10.7	0.0	18.7
0900-1000	Pro	0.0	25.8	8.1	0.0	0.0	16.1	0.0	0.0	0.0	50.0
	Ocp	0.0	1.4	2.8	0.0	0.0	1.3	0.0	0.0	0.0	13.4
1000-1100	Pro	1.5	19.7	10.6	0.0	0.0	25.8	3.0	0.0	0.0	39.4
	Ocp	1.0	1.4	1.6	0.0	0.0	1.8	1.5	0.0	0.0	16.3
1100-1200	Pro	6.0	37.5	4.5	0.0	0.0	16.5	0.0	0.0	0.0	35.6
	Ocp	1.0	1.6	1.7	0.0	0.0	1.4	0.0	0.0	0.0	16.9
1200-1300	Pro	2.5	41.0	8.7	0.0	0.0	21.1	0.0	0.0	0.0	26.7
	Ocp	1.0	1.3	1.7	0.0	0.0	1.8	0.0	0.0	0.0	19.0
1300-1400	Pro	0.0	36.0	12.5	0.0	0.0	13.8	2.8	0.0	0.0	34.9
	Ocp	0.0	1.3	1.7	0.0	0.0	1.6	2.0	0.0	0.0	16.4
1400-1500	Pro	0.0	32.1	9.6	0.0	0.0	19.3	0.0	0.0	0.0	39.0
	Ocp	0.0	1.5	2.0	0.0	0.0	1.4	0.0	0.0	0.0	20.8
1500-1600	Pro	0.0	44.8	8.4	0.0	0.0	15.4	0.0	0.0	0.4	31.1
	Ocp	0.0	1.5	2.2	0.0	0.0	1.8	0.0	0.0	9.0	23.3
1600-1700	Pro	1.2	43.8	6.1	0.0	0.0	15.8	0.0	0.0	0.6	32.5
	Ocp	1.0	1.5	2.2	0.0	0.0	1.3	0.0	0.0	11.0	30.4
1700-1800 Peak hour	Pro	3.3	37.3	13.2	0.0	0.0	13.2	0.0	0.0	0.3	32.9
	Ocp	1.0	1.6	1.6	0.0	0.0	1.9	0.0	0.0	17.0	39.7
1800-1900	Pro	2.8	38.9	8.3	0.0	0.0	5.6	0.0	0.0	0.7	43.8
	Ocp	1.0	1.4	1.5	0.0	0.0	1.0	0.0	0.0	11.0	55.0
1900-2000	Pro	3.4	36.8	20.7	0.0	0.0	3.4	0.0	0.0	0.3	35.3
	Ocp	1.0	1.6	1.2	0.0	0.0	2.3	0.0	0.0	11.0	39.5
2000-2100	Pro	0.0	24.3	42.2	0.0	0.0	2.6	0.0	0.0	0.0	31.0
	Ocp	0.0	1.4	1.0	0.0	0.0	1.5	0.0	0.0	0.0	31.5
2100-2200	Pro	2.0	28.1	22.1	2.0	0.0	0.0	0.0	0.0	0.0	45.7
	Ocp	1.0	1.5	1.3	3.0	0.0	0.0	0.0	0.0	0.0	36.3
2200-2300	Pro	2.4	22.0	14.6	0.0	0.0	0.0	2.4	0.0	0.0	58.5
	Ocp	1.0	1.8	1.7	0.0	0.0	0.0	2.0	0.0	0.0	37.5
16 hours	Pro	1.9	32.5	13.4	0.2	0.0	12.3	0.5	0.4	0.2	38.7
	Ocp	1.0	1.5	1.5	3.5	0.0	1.6	1.8	10.5	11.6	27.7

**Legend**

**Pro.** Proportion of vehicles in % (Sum may not add up to 100% due to figure rounding)\*

**Ocp.** Average occupancy of vehicles including both driver and passengers\*

**M&H** Medium and Heavy

\* All traffic data are collected from combined bounds except for one way traffic